

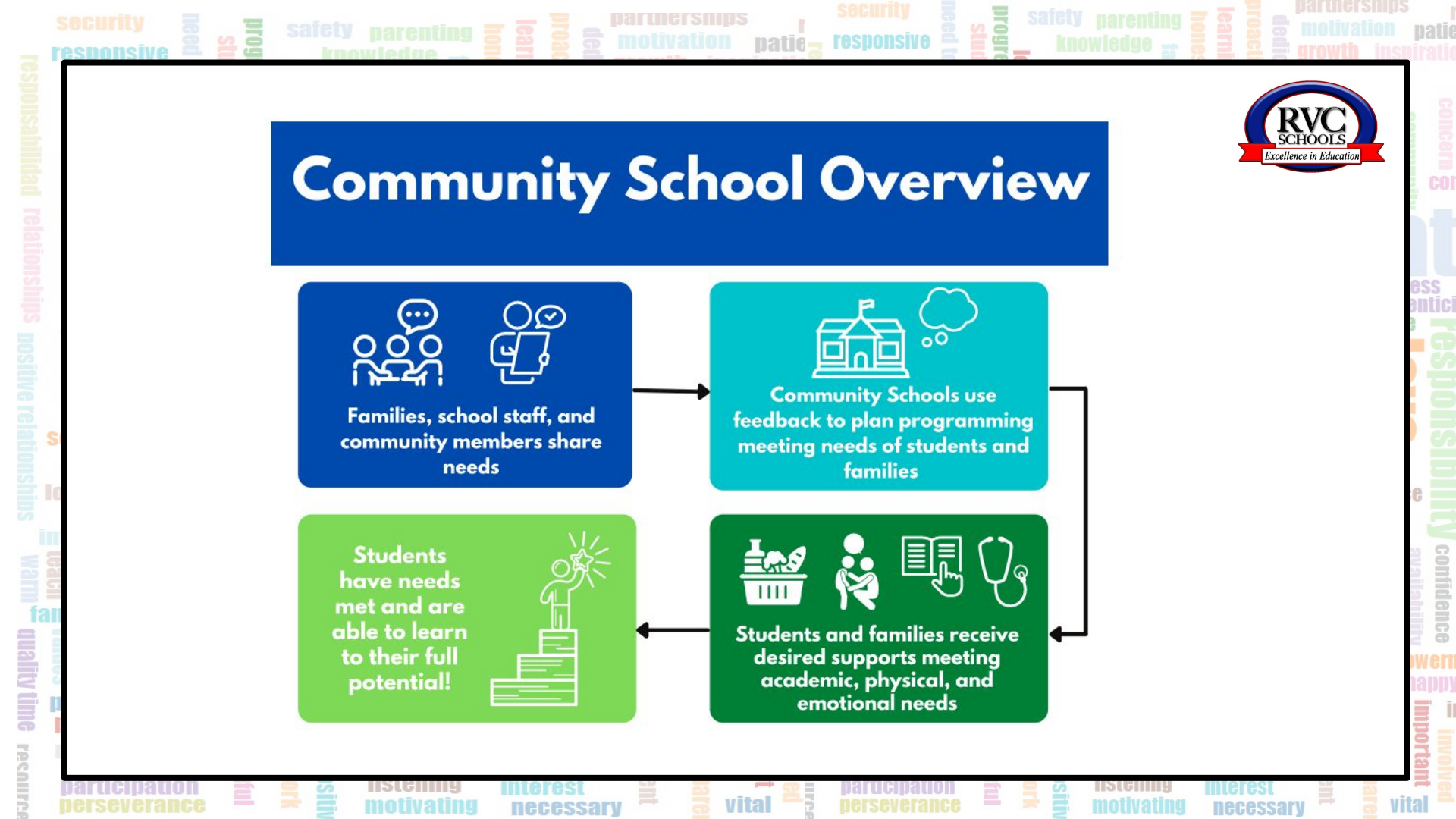


Community Schools Model

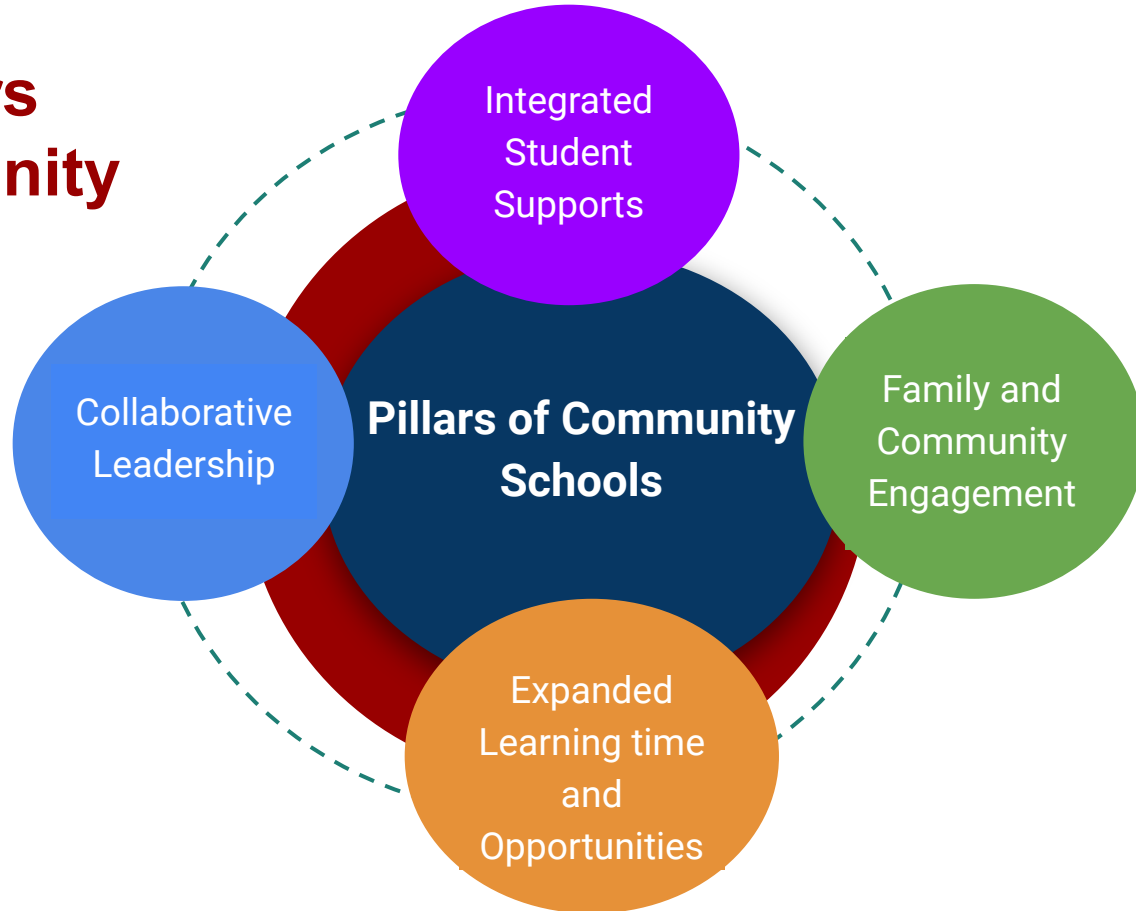
A Whole School Approach

November 3, 2022

Community School Overview



Four Pillars of Community Schools



Collaborative Leadership

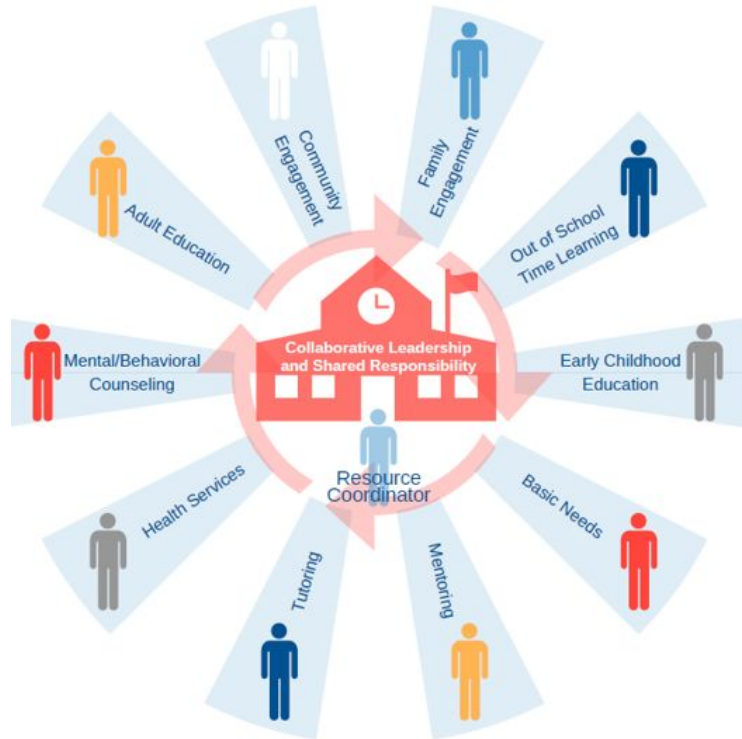
Pillars of Community Schools

Expanded Learning time and Opportunities

Family and Community Engagement

Integrated Student Supports

RVC as a Community School Model



- Whole child approach
- Academic, social and emotional Supports
- Physical health
- Mental Health
- Programming
 - MTSS
- Community based partnerships
- Family engagement
- Adult education

Sources of Funding



Federal

- GEER
- CARES Act
- CRRSA
- ARP Act
- Title I, II and IV
- 21 CCLC

State

- Foundation Aid
- BOCES-Co-Ser
- CSGI- *5 yr renewable*

Local/ Private

- Kellogg Foundation
- Gates Foundation
- Local Govt.

Funding: Return on Investment



- For every \$1 invested in establishing a community school, the national average return on investment (ROI) is \$7.03.
- The average ROI for a Community School coordinator is \$14 for every \$1 invested.
- United Community Schools data shows \$100,000 investment in a Community School director can bring in \$600,000 in services and grants.

(Source: www.Nysut.org/resources)

Next Steps...



- Exploration of possibilities
- Regional Coordinator- TAC
- Implementation team
- Needs Assessment
- Grants/ Funding opportunities





“The greatness of community is the fuel that drives vision and ignites successful teamwork.”

Coretta Scott King

